

## Committed to serve

Fleming-Mason Energy provides our 25,000 members with safe, reliable and cost-effective electricity. It's our primary reason for being, but it's not our singular purpose. Beyond the poles and lines, we also exist to power communities and empower members to improve the quality of their lives.

As one of Kentucky's Touchstone Energy Cooperatives, Fleming-Mason Energy subscribes to the standards of integrity, accountability, innovation, and commitment to community as the cornerstones of member engagement. These timeless values guide your cooperative like a compass.

### What we value

As a Touchstone Energy cooperative, we are a local, active member of the communities in our service area. We are committed to continue serving our residential, commercial and industrial members with the same values we have always had, going back to 1938.

#### 1. **Integrity:** Members come first.

Every day. That's the power of membership. As a not-for-profit electric cooperative, Fleming-Mason Energy delivers energy to our members at the cost of service. This differs from investor-owned utilities that distribute profits to

investors across the nation or even the world—not necessarily to those they serve.

2. **Accountability:** Fleming-Mason Energy belongs to you—the members we serve. Decisions made benefit those in our community because co-op business is conducted through a locally elected board of directors who propose policies to be voted on by members. We appreciate the dedication and service of our directors Tom Saunders, John Roe, Dina Gooding, Tim Eldridge, Rick Hord, Regina Rose and Shane Smoot.

3. **Innovation:** We recognize that, like any business or industry, technology changes to make daily tasks more efficient. Our commitment to you is to always seek out new innovations and technology to improve the quality of service you receive while continuing to operate your cooperative efficiently and effectively.

4. **Community:** We're committed to improving the quality of life in the communities we

### At your service, 24/7

Should you experience an electric outage, cooperative employees are standing by to respond 24/7. To report an outage, call 1-800-464-3144.



TIM WEBB

serve. True to the cooperative spirit, Fleming-Mason Energy donates time, energy and resources to charities, schools and community events and takes a leadership role in community development projects.

In all that we do, Fleming-Mason Energy puts members first and always has a local, member-driven, community-focused vision. This is what we value. This is the cooperative difference.



Brandon Hunt  
PRESIDENT & CEO

## Contact us:

In Fleming County:  
(606) 845-2661

Other Counties:  
(800) 464-3144

Hours:  
7:30 A.M. – 4:30 P.M.

### Editor

Lori K. Ulrich

### President & CEO

Brandon Hunt

### Board of Directors

Tom Saunders  
CHAIRMAN

John M. Roe  
VICE CHAIRMAN

Dina Gooding  
SECRETARY TREASURER

### Other Directors

Timothy S. Eldridge

Rick Hord

Regina Rose

Shane Smoot

### Attorney

Earl Rogers III

### Follow us on:



# Fleming-Mason Energy adds new scholarship opportunity

*Annual meeting scholarship drawing deadline  
May 31, 2024*

Fleming-Mason Energy is proud to sponsor a unique scholarship opportunity for 2024. Fleming-Mason Energy will award two \$1,000 scholarships to graduating high school seniors who live within our service area. The scholarships will be awarded based on a random drawing at this year's annual meeting on Thursday, June 27, 2024, during the business meeting. All eligible students must check in at the assigned drawing area before the meeting and must be present to win. In addition, applications must be submitted with proof of eligibility by the close of business May 31, 2024, to be eligible for the drawing. Those selected for an annual meeting essay scholarship WILL NOT be eligible for the drawing. Some of the participation requirements are:

- Candidate must be from the Fleming-Mason Energy service area, attend a school in our service region and be living with a parent or guardian who is a Fleming-Mason Energy member. The account must be registered in one or both names.

- Applicants must be enrolled or planning to enroll in an accredited educational or training institution.
- All candidates must agree to allow their image to be used for promotion on Fleming-Mason Energy's website and/or social media accounts.
- The applicant cannot be a member of the immediate family or (reside in same household) of an employee or director of Fleming-Mason Energy, its subsidiary or its power supplier, East Kentucky Power Cooperative.
- Incomplete applications, applications received after the deadline and/or applications submitted on prior year's application forms WILL NOT be considered.
- All applications for the annual meeting scholarship drawing must be received by May 31, 2024.

You may obtain a complete list of qualifications and applications for both by visiting [www.fme.coop](http://www.fme.coop) and clicking on the "Youth Activities" tab or calling Fleming-Mason Energy at (800) 464-3144.

# EV charging pilot program

You see more electric vehicles on the road every day. What used to be a rare sighting is more common.

If you've bought one yourself, you could get a break on charging costs with a new pilot program from your participating Kentucky's Touchstone Energy Cooperative.

The pilot program provides monthly bill credits when you charge your vehicle during off-peak hours.

## Why?

Charging your EV as soon as you arrive home (typically at peak energy needs in the early evening), can create a significant demand on your co-op and the electric grid, resulting in increased costs for everyone.

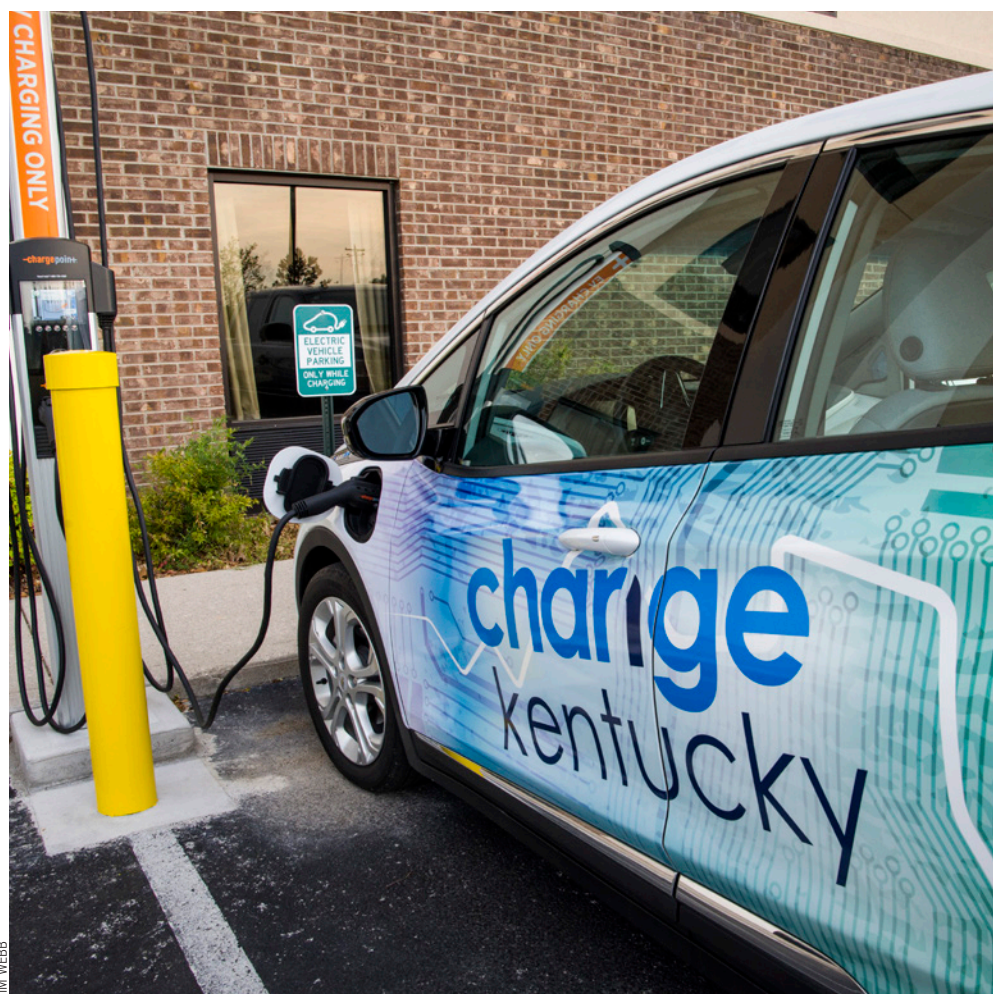
By delaying your charge time until after 10 p.m., you can reduce costs for the cooperative during those peak times. It helps your co-op keep rates low and helps you save money.

## How does it work?

Co-op members sign up online and receive an approval email with instructions on completing the registration process. Once your application is processed, you will have granted permission for your co-op to receive charging data from your EV.

This data is collected through a trusted, third-party vendor without any work on your behalf. The data is used to determine how much of your EV charging was eligible for your charging credit.

All you need to do is simply program your EV to charge between the hours of 10 p.m. and 6 a.m. at



your home (eastern prevailing time) year round, while participating in the program.

This test program runs through June 30, 2026.

Your co-op will credit your bill \$.02 for every kilowatt hour (kWh) your EV charged off-peak while at home.

That's it! Need a charge during peak times? No problem. Charging outside the off-peak window will simply be billed at your normal rate. You can stop participating at any time by contacting your local co-op.

## Who can participate?

Any residential member of a participating Kentucky's Touchstone Energy Cooperatives who charges an EV at home with Level 2 electric vehicle supply equipment (240 volt) is eligible to participate.

The EV must be compatible with the energy software platform utilized for this program.

We hope you'll consider joining the pilot program to save yourself money, and to lower peak demand on the grid. It's a win for everyone.

To sign up, go to <https://together.wesaveky.com/ev-pilot-program>.

# 4 reasons to upgrade to a smart thermostat



Already sweating the potential high cost of running your air conditioner when temperatures heat up? Then it may be time for an upgrade to your thermostat.

A smart thermostat can keep your Kentucky home cool while also trimming power costs. An added incentive: Fleming-Mason Energy members who use an eligible device can earn a rebate.

“Installing a smart thermostat now will save you money on cooling costs this summer as well as heating when cold weather arrives. You can be comfortable, and energy efficient, year-round,” says Michael Parker, Fleming-Mason Energy’s residential energy advisor.

He lists these top benefits that smart thermostats can offer for co-op members:

- Reduce electric bill. According to real-world data gathered by the

Environmental Protection Agency, smart thermostats that meet ENERGY STAR criteria save users an average of 8% on their utility bills. State-of-the-art features and capabilities allow these devices to “sense” when your home is empty and automatically switch to an energy-saving mode. Maintenance and repair costs are also lower when an A/C isn’t working overtime to cool an empty house.

- Easily control temperature. High-end smart thermostats are capable of learning your habits and daily routines to automatically adjust the temperature for maximum efficiency. You also have the flexibility of manually switching settings. Adjust a set schedule or even change the current temperature setting in real-time through a smartphone-connected app.

- Track energy use. Most smart thermostats now provide reports or allow you to access data in an app to monitor your energy usage. Some models can also offer suggestions for saving power.
- Score a rebate. Any Fleming-Mason Energy member can enroll a qualifying smart thermostat used for cooling in the Simple Saver program. Participants receive a \$10 bill credit per thermostat for up to two thermostats. A \$20 bill credit per thermostat is also added at the end of each summer season. Participants may also be eligible for an additional \$100 program enrollment offer. Find the details at [simplesaver.coop](http://simplesaver.coop).

Install a smart thermostat now to keep your cool with energy savings all summer long.

## Test GFCIs monthly

When is the last time you checked to make sure your ground fault circuit interrupters are working?

The GFCIs that prevent electrocution could be damaged by power surges during storms. You won’t know unless you test them.

A GFCI, which can be part of an electrical receptacle or circuit breaker or in a portable device, trips the circuit when it detects ground faults or leaky currents. It protects the user of

electrical equipment from electrocution by shutting off the electric path to that appliance.

An estimated 47% of electrocutions could be prevented with proper GFCI protection, according to the Electrical Safety Foundation.

Test yours every month, and again after power surges. Here’s how:

- Push the reset button on the GFCI receptacle to prepare the unit for testing.

- Plug a lamp into the GFCI and turn it on. The lamp’s bulb should light up.
- Push the GFCI’s test button. The lamp should turn itself off.
- Push the reset button again. The lamp should turn on again.

If the lamp doesn’t turn itself off when you push the test button, that means your GFCI is on the fritz. Call a licensed electrician to fix it.